



Authentic
Slaked Lime

Penetrates
and
Becomes
Part of Brick

Finish Lets
Brick
Breathe

LIMEWASH

BEAUTIFUL AND NATURAL
LIME FINISH FROM EUROPE

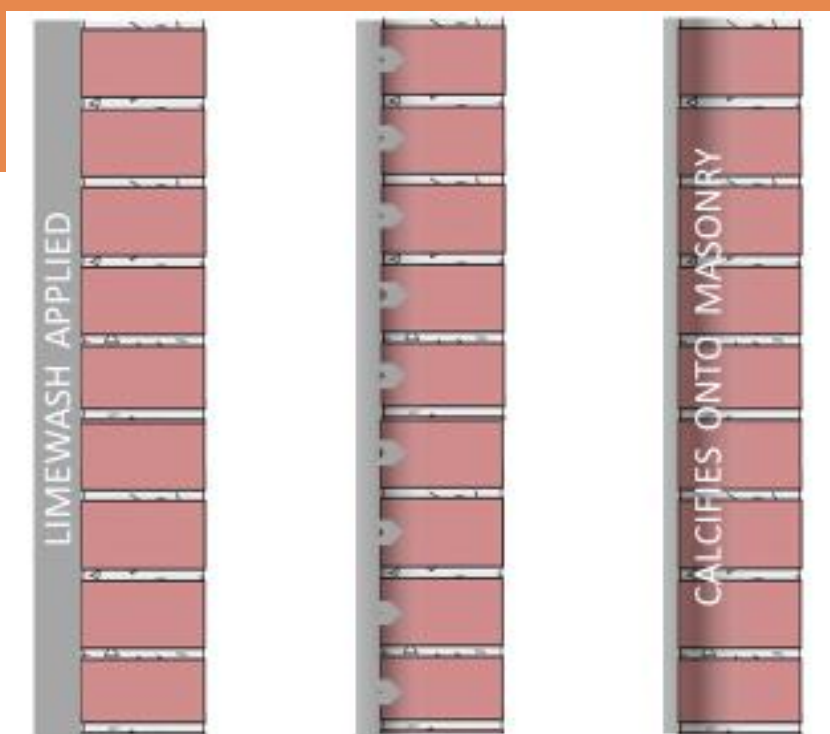
For Brick, Stone, and Stucco

PENETRATING BONDS THAT LAST A LIFETIME

Keim Limewash is made from dolomitic lime mined in the Alps and aged in lime pits, to ensure the highest quality. Aged, slaked lime is unlike any modern acrylic or latex paint finish. It penetrates and calcifies onto the brick, masonry or stucco becoming part of the surface. It will never peel, blister or flake and requires very little maintenance. Limewash can be applied in a variety of applications to provide a one-of-a-kind look to your home's exterior.

Modern paints contain thermo-plastic resins and can look "artificial" on brick, stone or stucco. Limewash is mineral matte flat, like the masonry itself, and always looks natural. Some call it an Old-World finish because of the unique patina that develops rapidly as it weathers. Due to the micro-porous nature of Limewash, it even darkens after rain, just like your masonry.

Limewash becomes part of your masonry



Limewash applied at left, penetrates porous brick and masonry, and calcifies to chemically become part of the masonry. Limewash is not simply a paint layer, like ordinary paint, and cannot chip, peel or blister from brick. The crystalline nature of Limewash allows moisture vapor, that can build up inside masonry, to freely evaporate to the outdoors without harm to the Limewash surface.

LIMEWASH LOOKS AND FEELS UNIQUE

Painting brick is a big commitment, so you'll want to be sure your paint/brick relationship is a beautiful one. Limewash ages gracefully outdoors and produces a gorgeous patina, but due to calcification, never loses adhesion. Limewash gently ages with weather achieving a softer, more time-worn appearance, and is easy to touch-up in case of damage. Depending on color, it can take on a mottled or even "streaked" appearance that mimics finishes that have naturally weathered for decades. And it can be made to look "antiqued" in one easy application. There is no limit to your creativity with Limewash.



You can see that brick and Limewash were made for each other!

The mineral nature of Limewash ensures the most authentic finish for your home's masonry. Whitewashed finishes have a charming Old World feel and can instantly update even the most tired surface. And you can retain the beauty of your brick without fully committing to painted brick.

Test your Limewash Technique

A great thing about Limewash is that it can be easily removed for two days after application. Test various colors or practice your technique, without worry. Power wash the samples away, but remember you must remove it in two days, before the calcification process is complete—making it permanent.

ONE FABULOUS FINISH, MANY DIFFERENT LOOKS

The unique nature of Limewash allows for many looks from whitewash to fully painted and even a textured option. Here are just some examples of the decorative options you have with Limewash.



ANTIQUÉ FINISH: This finish is applied then areas are washed away before the Limewash becomes permanent. Thin Limewash 50% with water and apply to cover the surface entirely. After 12—24 hours, use a jetted garden hose to wash away as much (or little) as desired. Wash away more at corners and windows for a natural aged affect. You can use damp towels in tight spots to antique the Limewash. Color: 10000 Bianco Cristallino



WHITEWASH: Thin Limewash 100% and apply as a uniform translucent wash using a roller for even distribution of wash. Repeat the process after 24 hours for a more opaque wash. Color: 11055 Lino Bianco

COLOR: Choose Limewash colors from Keim's curated collection at residential.keim-usa.com/european-limewash-colors



BRUSH-ON TECHNIQUE: Thin Limewash 50--100%, use a Pro 3.5" Masonry Nylon Brush to create a random, irregular washed appearance. After 24 hours apply a second coat to intensify the color wash effect. Color: 10000 Bianco Cristallino



SOLID FINISH: Thin Limewash 50% and apply in multiple layers by brush, roller or spray. Thin subsequent layers with more water to create a tone-on-tone effect in darker colors. Color: 10000 Bianco Cristallino

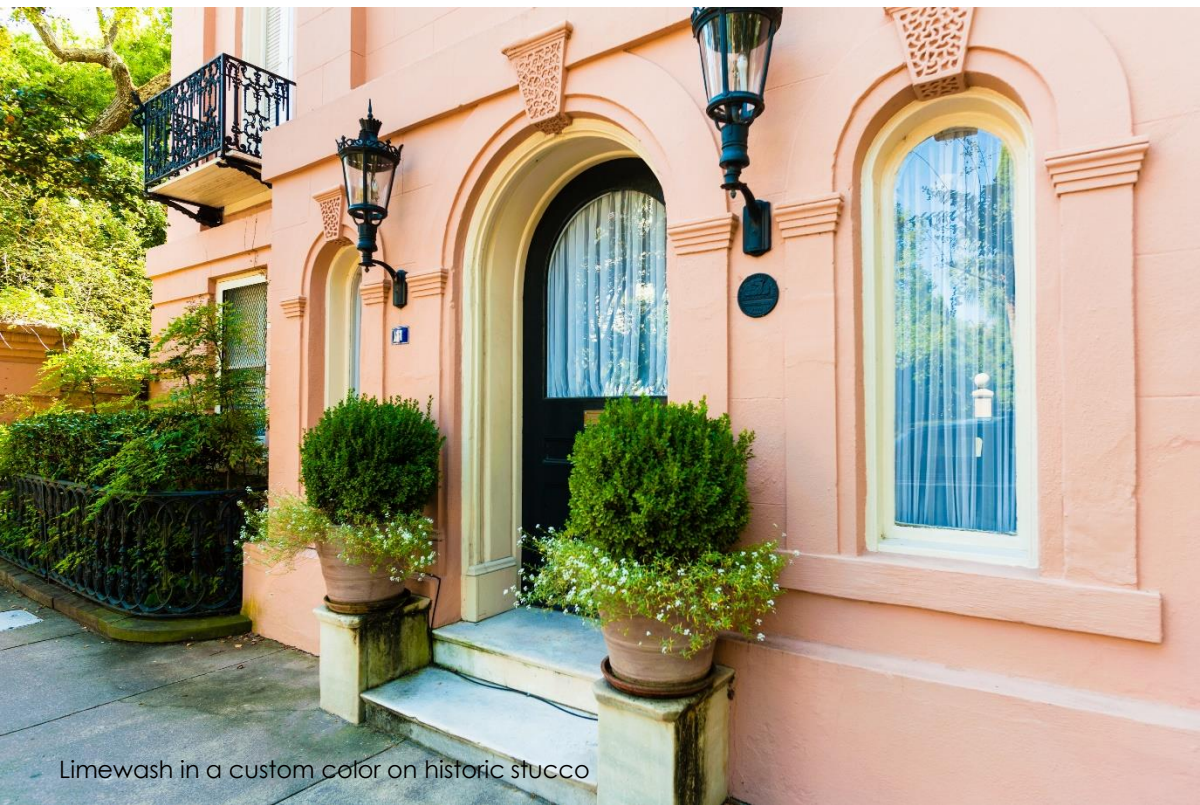
KALE! Mix undiluted Limewash (1 part to 1 part) with Keim Lime Slurry, a texture additive. Mixture will be very thick and "sandy". Apply to surface with a stiff bristle brush or large steel trowel working from bottom to top. Finish with Pro 3.5" Masonry Nylon Brush in horizontal strokes to create the textured "drag" appearance. Dry overnight and repeat process to further fill-in mortar contour.



Antique Technique Color: 10000 Bianco Cristallino



Antique Technique Color: 10062 Bianco Pura



Limewash in a custom color on historic stucco

KEIM Mineral Coatings of America, Inc..
3935 West Perimeter Drive Suite 100
Charlotte, NC 28214
866.906.5346
KEIM.com
info@keim.com
© Keim Mineral Coatings, Inc. 2021

KEIM
COLORS FOREVER. 